

## [Department of Hematology and Bone Marrow Transplantation \[1\]](#)

**Head of the Department:** Marcin Pasiarski, Habilitated Doctor, internal medicine specialist, hematologist.

**Contact:** +48 41 367 4182

**Scientific consultant:**

**The Department comprises:**

1. Hematology and Blood Cancer Unit,
2. Acute Leukemia Unit,
3. Bone Marrow Transplantation and Apheresis Unit,
4. Hematology and Blood Cancer Laboratory (with the offices of Coagulation Disorders and for patients who underwent Bone Marrow Transplantation),
5. Clinical Immunology Unit with Immune Disorders Clinic and Laboratory of Clinical Immunology,
6. Outpatient Hematology Clinic,
7. Hematopoietic Cells Bank with Laboratory of Bone Marrow Processing.

At present, the Department of Hematology and Bone Marrow Transplantation has 51 beds.

**The diagnostic services include:**

- a full range of blood tests and bone marrow (cytology, Immunophenotyping),
- imaging (ultrasound, computed tomography, magnetic resonance imaging, PET),
- karyotype,
- FISH,
- Molecular tests,
- Viral tests.

**Bone Marrow Transplantation Unit** has 7 single rooms equipped with positive filtration and laminar airflow. Each room has a set of monitoring vital signs (ECG, RR, saturation, etc.), bathroom, TV and Internet connections for the sick. No visiting policy applies to all visitors.

In this department we perform autotransplantations of hematopoietic stem cells (bone marrow). Patients are admitted with prior qualification for this treatment. The patient undergoing the qualification process should have a current referral, summarizing the current treatment, results of laboratory and imaging tests of the entire period of the disease.

**Acute Leukemia Unit** offers 10 beds in 5 double rooms equipped with a sluice room and sanitary facilities as well as anti-infective equipment. We offer diagnosis and treatment of patients according to the latest Recommendations of the Polish Adult Leukemia Group (PALG) and the European Leukemia Net. In cooperation with other units of the Świętokrzyskie Cancer Centre and external institutions we offer full diagnostics (imaging (CT, MRI), functional (PET), flow cytometry, cytogenetic and biomolecular) and full treatment supplemented by transplantation procedures. We provide optimal treatment and monitoring of treatment effects. Precise definition of the advancement of cancer and its risk groups before the treatment, individual choice of treatment methods and monitoring the effects of treatment enables us to achieve high response and survival rates in our patients. We offer high-dose chemotherapy treatment. Cytostatic treatment related to the diagnosis is conducted based on the latest recommendations.

**Bone Marrow Transplantation and Apheresis Unit** has 34 beds including 4 single sickrooms, two treatment rooms where bone marrow biopsy, trepanobiopsy and other minor procedures are performed.

The Unit offers diagnostics and treatment of lymphoproliferative cancer such as: lymphomas, myelomas, chronic

lymphocytic leukemia, myeloproliferative neoplasms including chronic myelogenous leukemia, essential thrombocythemia, polycythemia vera, myelodysplastic syndromes and others, as well as the diagnosis and treatment of non-malignant diseases of the blood: anemia, coagulation disorders and other.



[2]



[3]



[4]



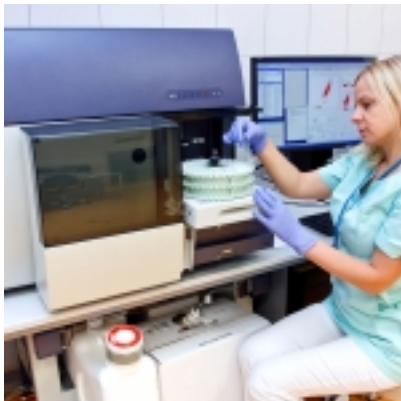
[5]



[6]



[7]



[8]

[Centrum](#) [9]

**Source URL:** <https://onkol.kielce.pl/en/centrum/department-hematology-and-bone-marrow-transplantation>

#### Links

[1] <https://onkol.kielce.pl/en/centrum/department-hematology-and-bone-marrow-transplantation>

[2] <https://onkol.kielce.pl/sites/default/files/styles/colorbox-zoom/public/galerie/budynek-kliniki-hematologii-i-transplantacji-szpiku-uc0.jpg?itok=QiME82ax>

[3] [https://onkol.kielce.pl/sites/default/files/styles/colorbox-zoom/public/galerie/img\\_3889-x.jpg?itok=GJezdmif](https://onkol.kielce.pl/sites/default/files/styles/colorbox-zoom/public/galerie/img_3889-x.jpg?itok=GJezdmif)

[4] <https://onkol.kielce.pl/sites/default/files/styles/colorbox-zoom/public/galerie/klinika-hematologii-i-transplantacji-szpiku-ols-hematologii-i-nowotwor-w-krwi.jpg?itok=Wl2RmBVy>

[5] <https://onkol.kielce.pl/sites/default/files/styles/colorbox-zoom/public/galerie/ostre-bialaczki.jpg?itok=jAfmNnoF>

[6] [https://onkol.kielce.pl/sites/default/files/styles/colorbox-zoom/public/galerie/poradnie-kliniki-hematologii-i-transplantacji-szpiku.jpg?itok=-dXyd\\_Kp](https://onkol.kielce.pl/sites/default/files/styles/colorbox-zoom/public/galerie/poradnie-kliniki-hematologii-i-transplantacji-szpiku.jpg?itok=-dXyd_Kp)

[7] [https://onkol.kielce.pl/sites/default/files/styles/colorbox-zoom/public/galerie/pracownia-cytologii-i-mikroskopii-2.jpg?itok=ZTlCJ\\_fr](https://onkol.kielce.pl/sites/default/files/styles/colorbox-zoom/public/galerie/pracownia-cytologii-i-mikroskopii-2.jpg?itok=ZTlCJ_fr)

[8] <https://onkol.kielce.pl/sites/default/files/styles/colorbox-zoom/public/galerie/pracownia-cytometrii-przeplywowej-2.jpg?itok=PLXn1yyS>

[9] <https://onkol.kielce.pl/en/sekcja/centrum>

